

# RAF Museum Challenge

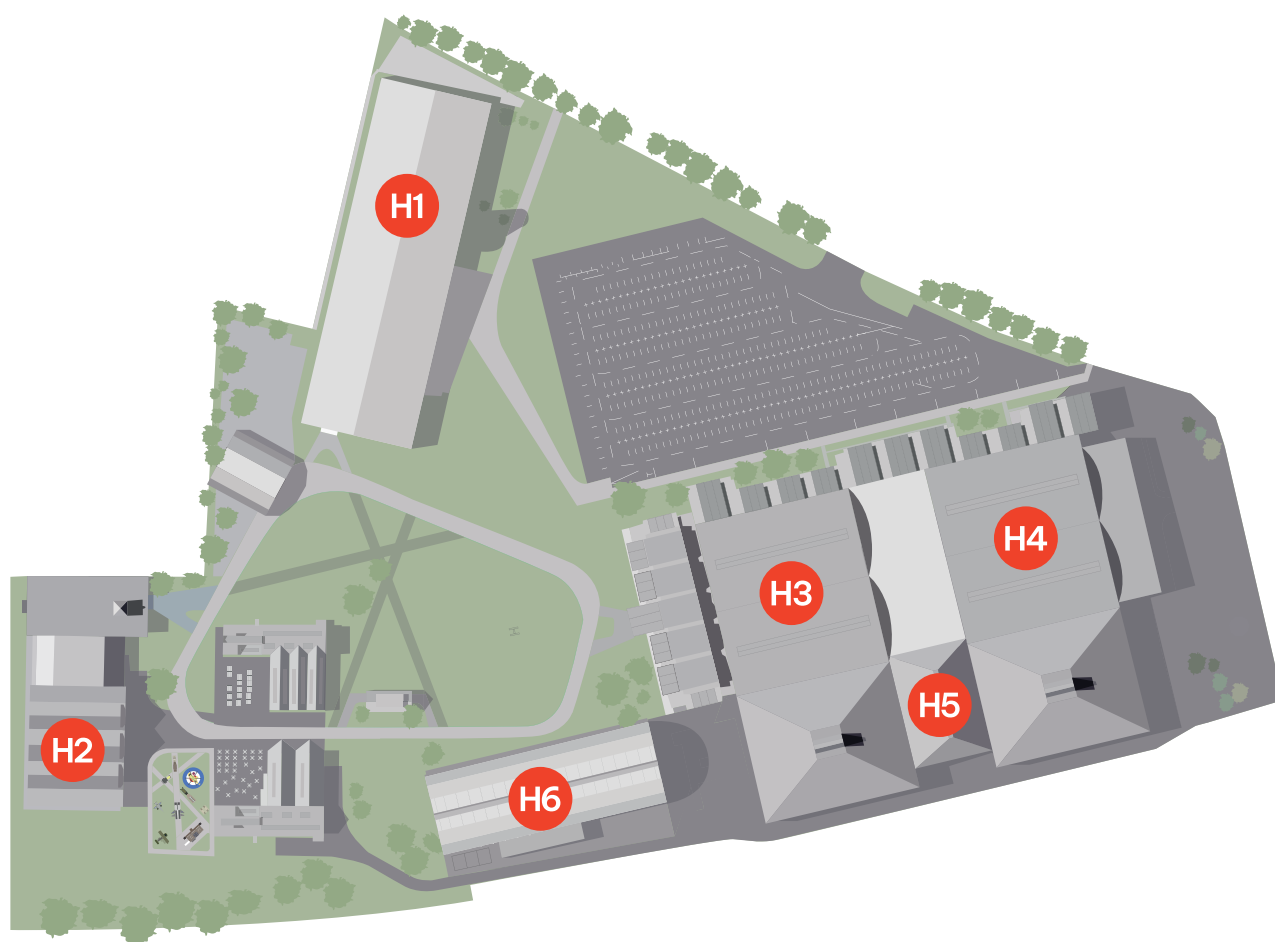


ROYAL  
AIR FORCE  
museum

Welcome to the RAF Museum London. Our Museum tells the story of the RAF from its formation during the First World War through to today and even looking to the future.

Your mission is to visit each of our Hangars, search for information, answer questions and reflect on what you see. Gain as many points as you can to become the RAF Museum Challenge Champions.

The questions are arranged by Hangar number. The final three sections can be completed anywhere in the RAF Museum.



# Good luck!



What is this a part of and what was it for?

Clue: Look at the Timeline

.....  
.....



Find this seat

What is this type of seat called?

.....

What does it use to propel the crew clear from the aircraft?

.....

Find Julie Gibson

What made her a first for the RAF?

.....

Where was she based?

.....



What is this device used for?

Clue: Look near the boat

.....  
.....



Find this outfit

What job did its wearer do?

.....  
.....

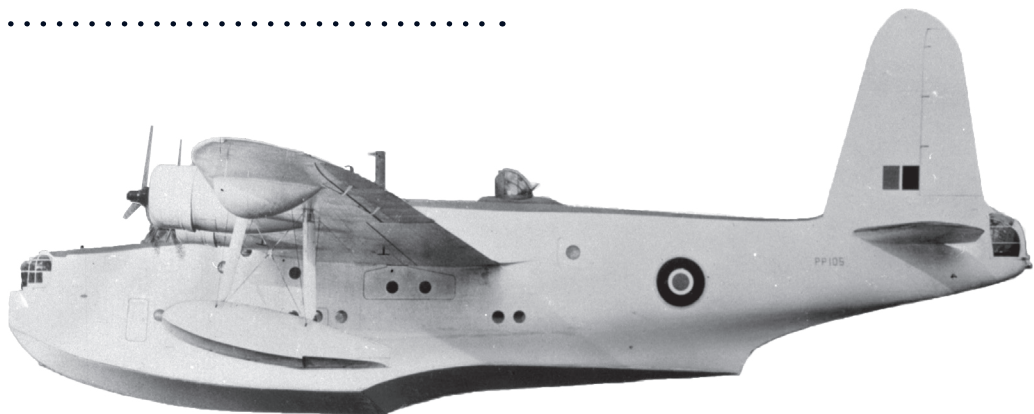
Find Short Sunderland

Why was it nicknamed the Flying Porcupine?

.....

At top speed, how far could it travel in two hours?

.....







Find this photograph of the Grahame White Factory building here at Hendon



What were they making?

.....

Why were there more women than men?

.....



What were these used for?

.....

.....

What was the role of the RE8?

.....

.....

How many missions would it need to fly to drop 750kg of bombs?

.....



Find the uniform that this hat is a part of

What rank does this uniform represent in the Women's Royal Air Force?

.....

What was the cap originally designed for?

.....



Who is this?

.....

What did he do before becoming an ace pilot for the RFC?

.....

.....



Find this small badge near the entrance to the ‘Higher, Faster, Further: The RAF 1919–1939’ exhibition

What does DH stand for?

.....



Find the uniform that this hat is a part of

Who owned this uniform?

.....

What rank did he achieve in 1958?

.....

Find the poster that this image is taken from

What is the poster encouraging people to do?

.....

Where could you go to do this if you aren't in or near London?

.....



## Find the De Havilland Vampire F3

It was part of the first generation of what type of fighter?

.....

What was its top speed in mph?

.....



## Find this pilot

What was her name?

.....

How many different aircraft  
did she fly?

.....







## Find the Lancaster Bomber

A bomb was painted on the side of the nose each time it completed a mission. How many missions did our Lancaster fly?

.....

When modified, a single Lancaster could carry around 10,000 kg of bombs. If modified and fully loaded, how many kg of bombs would our Lancaster have carried and dropped during its missions?

.....

## Find this item that looks like a large green oil drum

Clue: Look near the Lancaster bomber

What is it called?

.....

How did it work to destroy dams better than a standard bomb?

.....



Find the 'Stevens Stopper' - a fuze immuniser in the Battle of Britain display

What was it used for?

.....  
.....  
.....



Find this crewman near the crashed Halifax bomber

What was his name and job?

.....

Using his skills as an artist, what did he do to support fellow prisoners of war during the famous 'Great Escape' prison break?

.....

Find this uniform

Who in the RAF would have worn this uniform?

.....

What elements of this uniform were added to combat the cold of the British weather?

.....





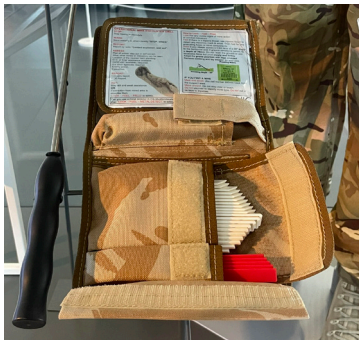
## Look for Trevor Edwards

When did he transfer from being a RAF Regiment Officer to becoming aircrew as a pilot?

.....

What role did he hold when he finished his career with the RAF?

.....



What is this kit used for?

.....

.....

.....

## Find the Buccaneer S2B aircraft

Why do the wings and nose fold up?

.....

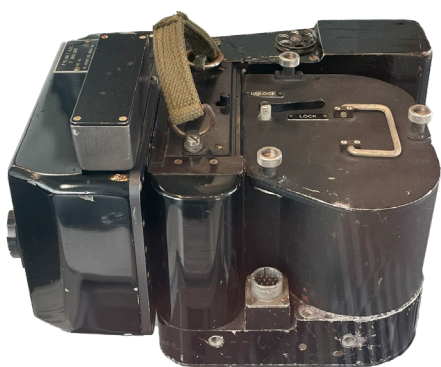
What environment is the pink camouflage for?

.....



What does this painting show?

.....  
.....  
.....



This device was carried by Jaguar aircraft in the early 1990s.  
What is it?

.....  
.....  
.....

## Search for the yellow uniform

What does P.W. mean?

.....

For how long were Sqn Ldr Robbie Stewart and his pilot Dave Waddington imprisoned?

.....



# Final Challenges

The final three sections can be completed anywhere in the RAF Museum.

There are:

A Photography Challenge

An Ethical Question Reflection Challenge

An Invention Challenge

## Selfie Challenge

Take a picture ...

- Next to a silhouette of someone in the RAF
- With an emergency vehicle
- With a helicopter
- With a piece of art
- Inside an aircraft.





# Ethic Question/s

Museums are a great place for reflection and debate.

At the RAF Museum we encourage you to think about issues that can be controversial. A major topic of debate surrounding the Royal Air Force is the use of bombing during the Second World War. Technology was not as advanced as we see today, so precision bombing of military targets was difficult and often ineffective. As a consequence, both the Axis and Allied powers used 'area bombing' tactics, the bombing of whole cities and population centres.

Use the boxes on the next page to write your thoughts on the following questions:

Was the death toll from the bombing of towns and cities during the Second World War justified in the context of attempting to end the war as quickly as possible?

What, if anything, do you think could have been done differently?

Would the same tactics be justified today?



1.

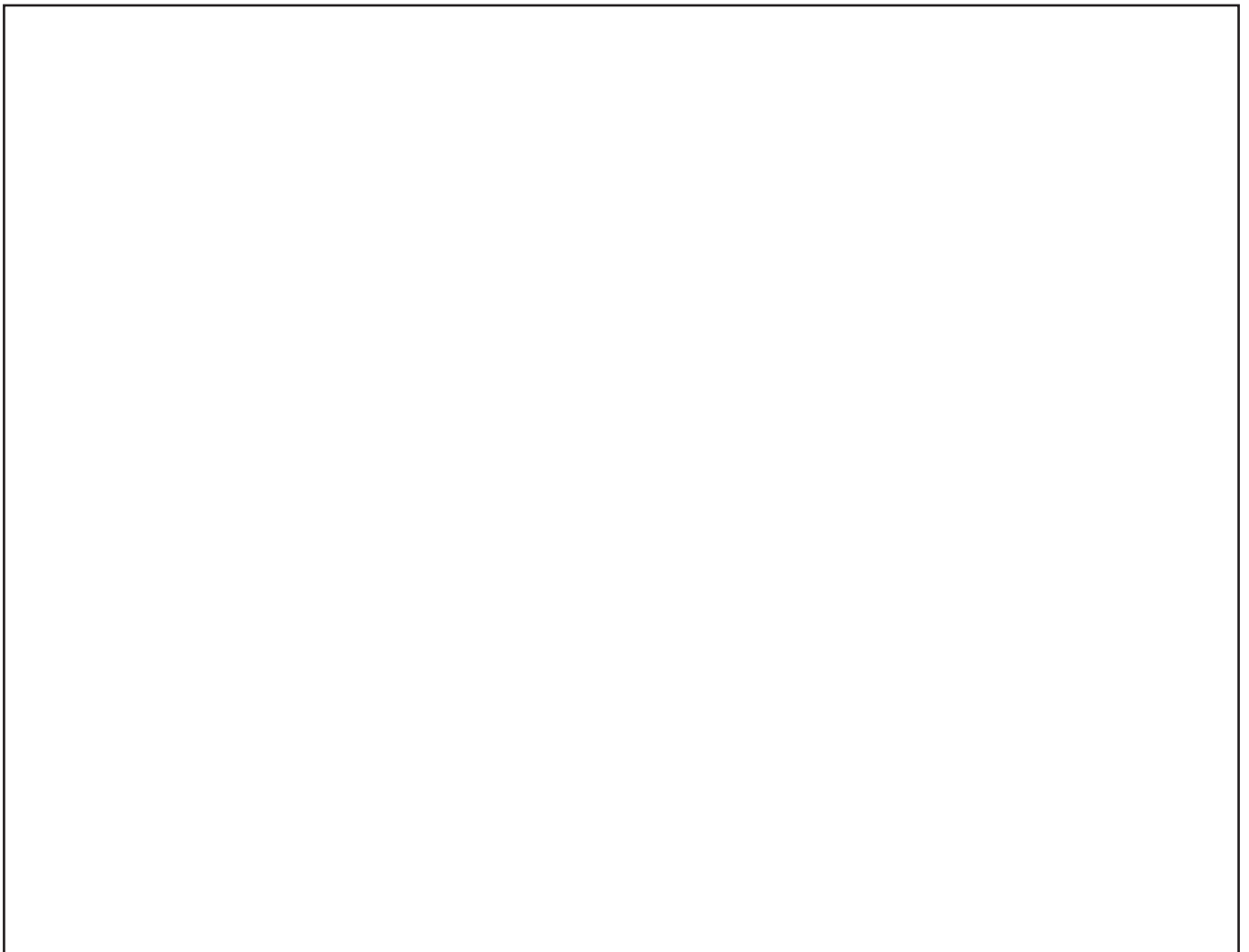
2.

3.

# Inventions

The RAF Museum is home to many inventions that have changed the way we travel, fly, fight, and live our everyday lives.

Find an invention and sketch it below. Include in your sketch some annotations to explain why your chosen invention was/is important and what it does for us.



**/2**

**Total: /55**